



Thule Rapid System Kit 1636

> Instructions

LEXUS CT 200h, 5-dr Hatchback, 11- / *12-

LEXUS CT 200h F Sport, 5-dr Hatchback, *12-

*North America

i **!** **B** THULE **A** THULE

Thule Rapid System 1636
> Instructions

Thule Rapid System 754
> Instructions

xx kg + 7 kg = Max. 40 kg (88 lbs)

xx lbs + 15,4 lbs = Max. 88 lbs

80 km/h 50 Mph 130 km/h 80 Mph
40 km/h 25 Mph

km/h Mph

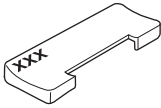
ISO 11154-E

141636
C.20130912
519-1636-02

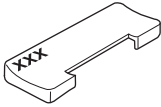
Bring your life
thule.com



204 x2



206 x2



1163 x2



1164 x2



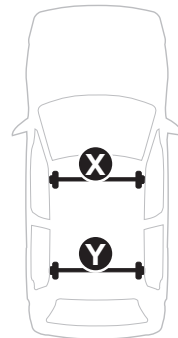
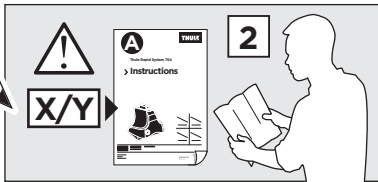
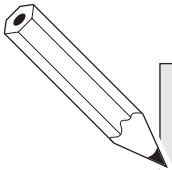
x1



x1

1

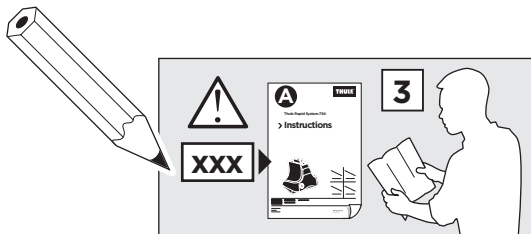
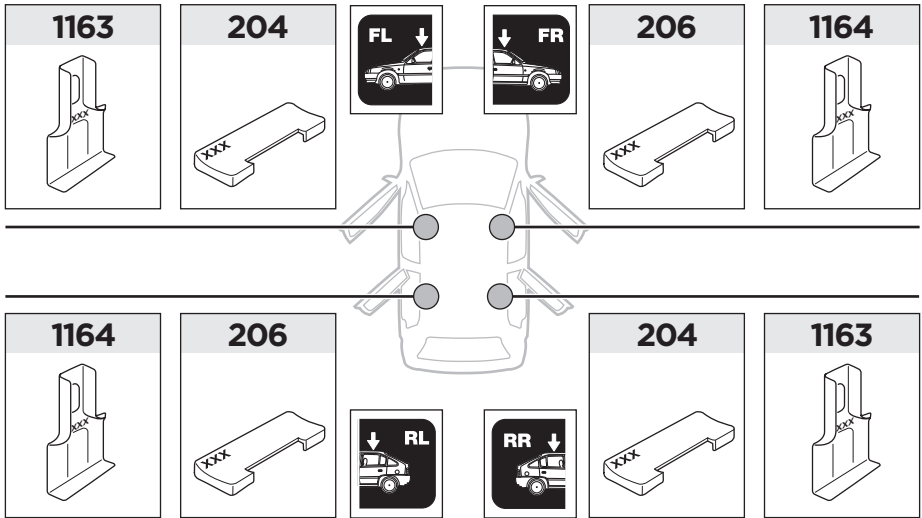
	X (scale)	X (mm)	X (inch)
LEXUS CT 200h , 5-dr Hatchback, 11- / *12-	29	941	37
LEXUS CT 200h F Sport , 5-dr Hatchback, *12-	29	941	37



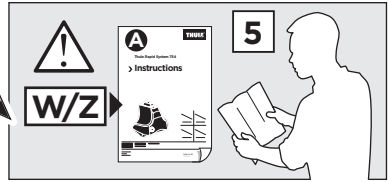
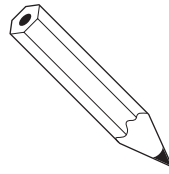
	Y (scale)	Y (mm)	Y (inch)
LEXUS CT 200h , 5-dr Hatchback, 11- / *12-	28	931	36 ⁵ / ₈
LEXUS CT 200h F Sport , 5-dr Hatchback, *12-	28	931	36 ⁵ / ₈

2

LEXUS CT 200h, 5-dr Hatchback, 11- / *12-
LEXUS CT 200h F Sport, 5-dr Hatchback, *12-



3



	W (mm)	Z (mm)	W (inch)	Z (inch)
LEXUS CT 200h , 5-dr Hatchback, 11- / *12-	200	700	7 7/8	27 1/2
LEXUS CT 200h F Sport , 5-dr Hatchback, *12-	200	700	7 7/8	27 1/2

